

Sagano

Canes

 Novaform[®]
by NOVAWALL



Sagano

Bamboo forests leave an indelible mark on their visitors. These remarkable plants are known for their accelerated growth habits and material flexibility, but encountered by the thousands in a forest setting, they manifest a distinctive sense of place through their unique visual cadence and meditative auditory soundscape.

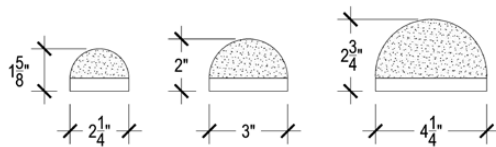
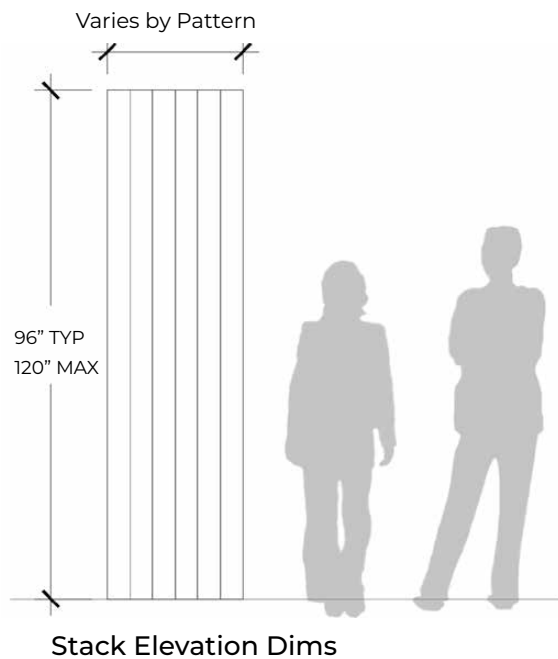
Novaform's Sagano canes draw inspiration from the towering bamboo groves of Japan's Sagano Forest, with its repeated vertical linear language and its overall sense of tranquility, peace, and balance.

Design

Sagano is a series of panelized, textile-wrapped foam canes that will easily transform any wall. Standard canes and beveled “Beberu” canes come in typical widths and suggested preassembled patterns, or “Stacks”. Custom cane and pattern stack options are available as well.

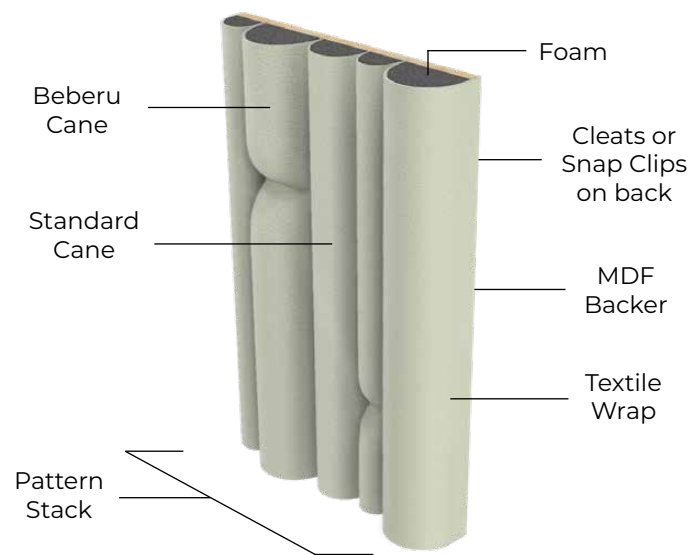
Sagano stacks come preassembled in units ranging from 18” to 36” wide to allow for a quick, consistent installation. Canes can be wrapped with Novaform felt, Novaform-partner felt, or most commercial fabrics. Please consult with us on suitability of COM selections.

Dimensions



Cleats will add 1/2" to overall depth and require a 3/8" reveal at ceiling

Components



Options



Custom profiles & Stack patterns
146 Felt colors
Covered ends

Environmental Commitment

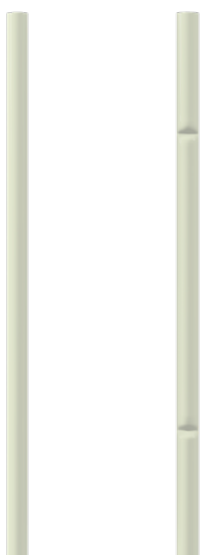
Novawall Systems, Inc. is committed to our clients' needs and offers a product line that will promote the design and implementation of a healthy sustainable building with minimal impact on the environment, while remaining in complete compliance with fire and safety codes as well as maintaining superior product quality.

Novaform 3mm PET felt is made from solution-dyed 100% recycled polyester.

Individual Canes

Standard Profile
(no bevel)

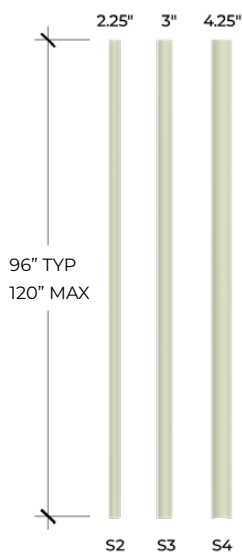
Beberu Profile
(beveled)



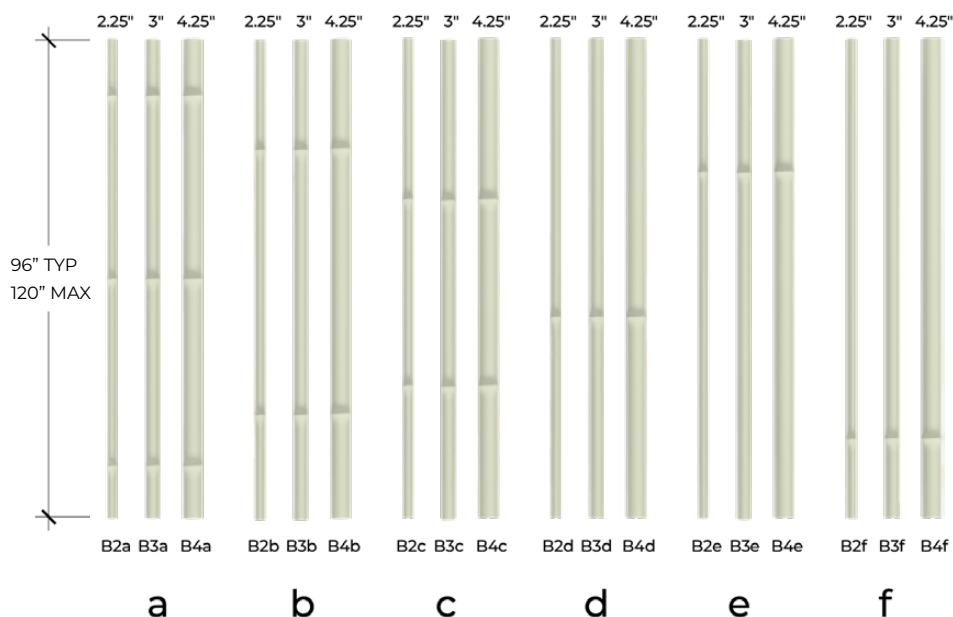
S B

Cane Widths & Elevations	Cane	Standard (\$)	Beberu (B)					
			a	b	c	d	e	f
	Elev.							
		Designation						
		Width	2.25"	3"	4.25"			
		S2	B2a	B2b	B2c	B2d	B2e	B2f
		S3	B3a	B3b	B3c	B3d	B3e	B3f
		S4	B4a	B4b	B4c	B4d	B4e	B4f

Standard Profile



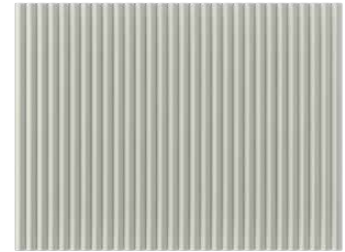
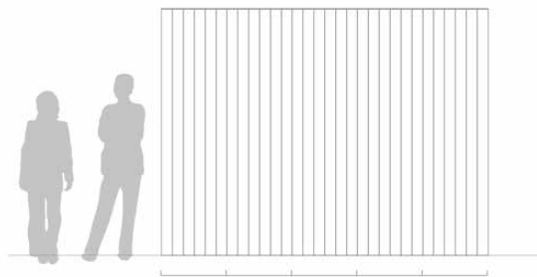
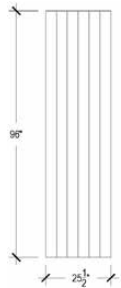
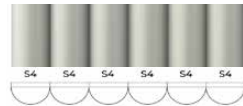
Beberu Profile



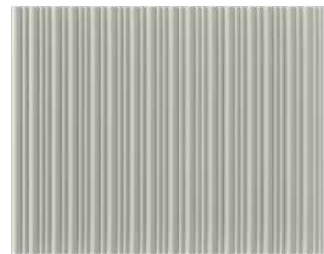
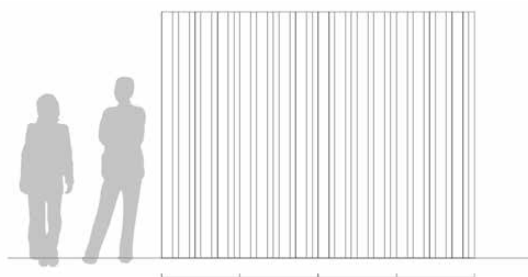
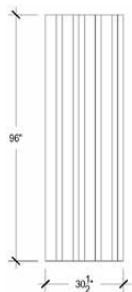
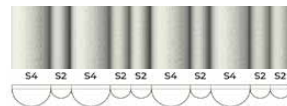
Pattern Stacks

Contact Novaform for Pattern Stack cut sheets

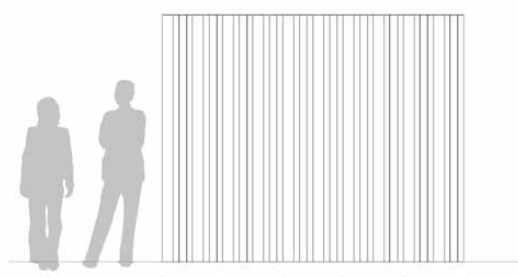
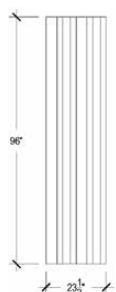
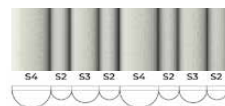
Sagano Stack A



Sagano Stack B



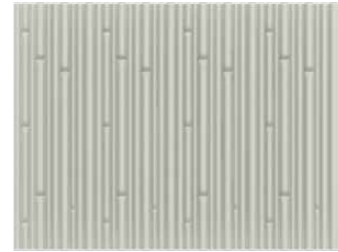
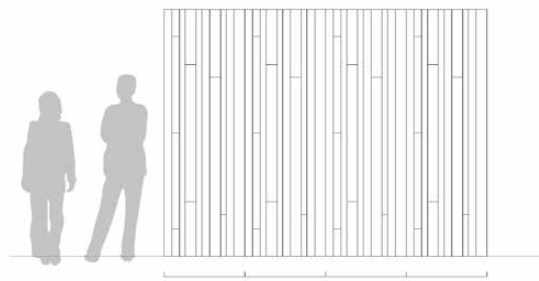
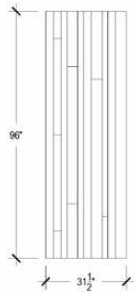
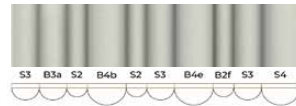
Sagano Stack C



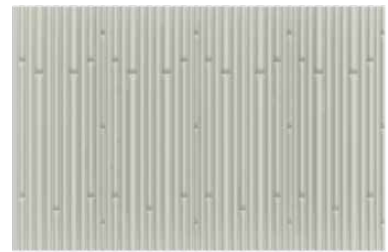
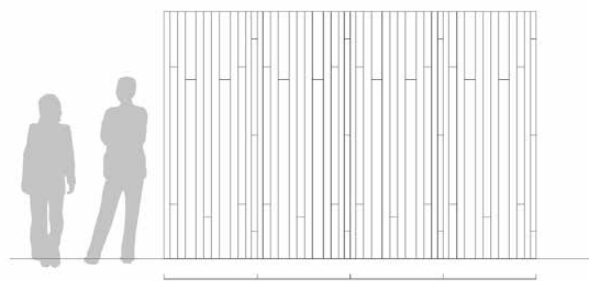
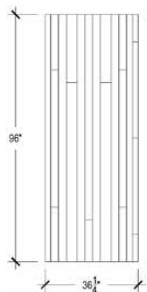
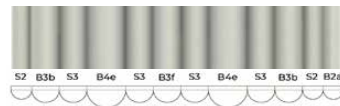
Pattern Stacks

Contact Novaform for Pattern Stack cut sheets

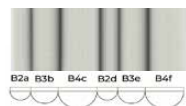
Sagano Stack D



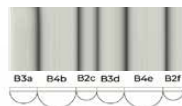
Sagano Stack E



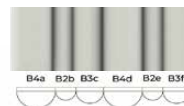
Sagano Stack F



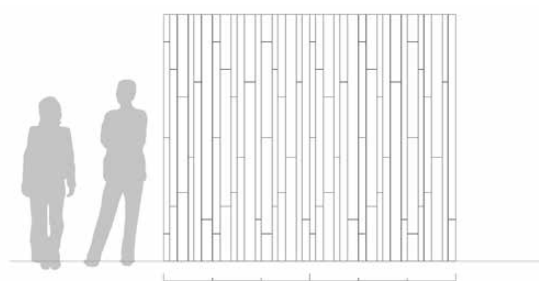
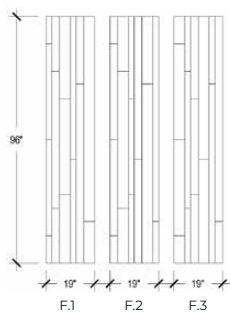
F.1



F.2



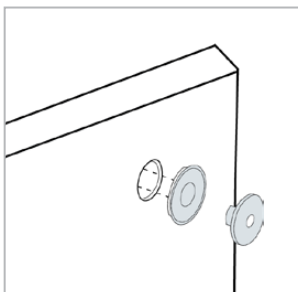
F.3



Specs

Product	Sagano Canes
Application	Walls, indoor only
Materials	MDF, Wood, Foam, and Textiles
Colors	25 Felt Options from Novaform's 3mm PET Felt 19 Felt Options from Guilford of Maine's 9900 Series 102 Felt Options from Gabriel's Hush, Soul, & Soul Melange Series 50 Fabric Options from Camira's Blazer series COM upon approval
Covered Ends	Available upon request
Custom	Variations available, request pricing
Cane Length	96" TYP, 120" Max
Cane Width	Standard 2.25", 3", and 4.25" (nominal)
Stack Width	Varies by pattern, TYP 18" to 36"
Thickness	Varies by cane width and mounting method
Mounting	French Cleats (3/8" throw) or Snap Clips
Maintenance	Vacuum to remove loose dust Clean with warm water, a white rag, and clear mild dish detergent - spot test first, avoid rubbing aggressively
Colorfastness	Per fabric specifications

Installation & Instructions



Cleats are directly fastened to Sagano Stacks with screws. Matching cleat is attached directly to the wall.

- or -

Female Snap Clips are countersunk into the back side of Sagano Stacks. Male counterparts are attached to wall mounted furring strips.

