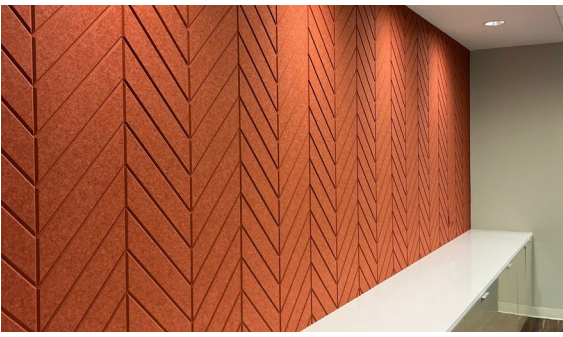


Ravine

Panel





Ravine

Water has sculpted the face of our planet since the very beginning, carving channels into the earth as it winds its way to the oceans. These deep ravines have influenced how we move through the landscape and how we live on the land.

Novaform's Ravine cuts are inspired by these remarkable land formations, from the hollows in the Appalachians, one of the planet's oldest mountain ranges, to the spectacular carved canyons of the American West.

The possibilities are limitless when you're taking your cues from Nature.

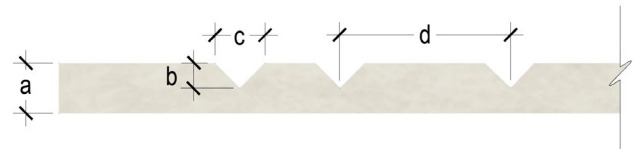
Design

Standard Panel Size

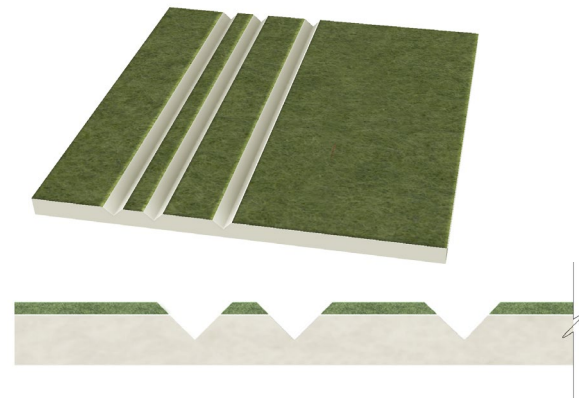


Panel Thickness & Cutting Depth

Panel Thickness	Cut Depth	Cut Width	Distance Between Cuts
a	b	c	d
1/4"	1/8"	1/4"	Varies by design
1/2"	1/4"	1/2"	Varies by design
1"	1/2"	1"	Varies by design



Optional Felt Topper



Custom Designs

If the available patterns are not quite what you are looking for, please contact us. We can create custom Ravine patterns to match any design intent.

Environmental Commitment

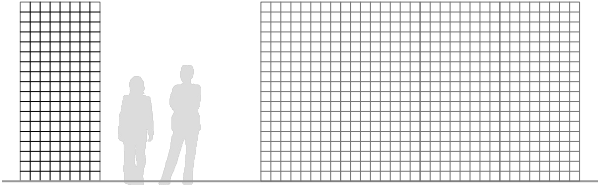
Novawall Systems, Inc. is committed to our clients' needs and offers a product line that will promote the design and implementation of a healthy sustainable building with minimal impact on the environment, while remaining in complete compliance with fire and safety codes as well as maintaining superior product quality.



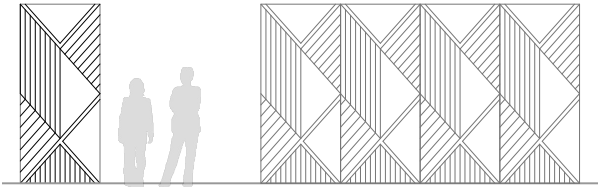
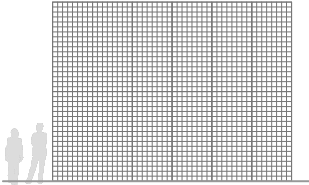
Every Novaform panel contains the recycled plastic equivalent of approximately 300 water bottles.

Ravine Patterns

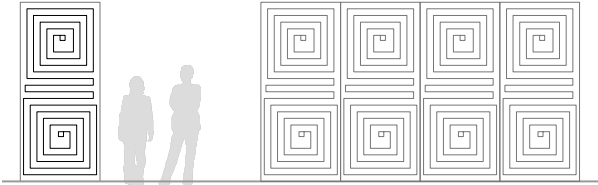
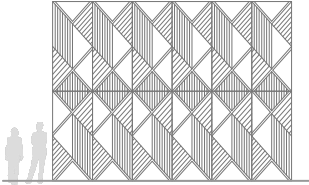
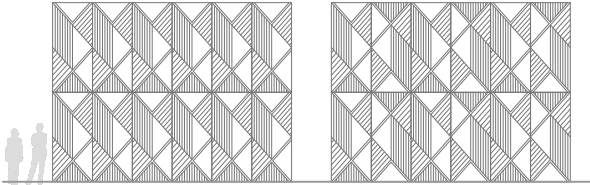
Contact Novaform for individual design cut sheets.



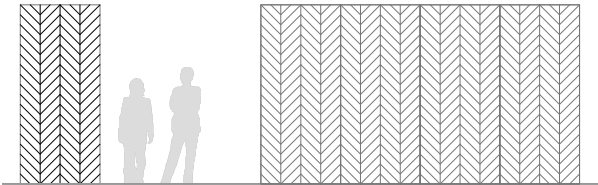
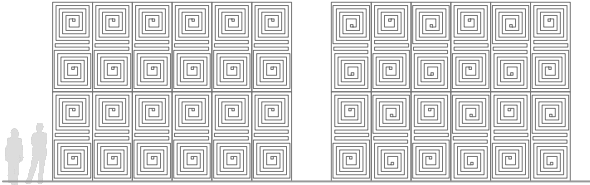
Arid



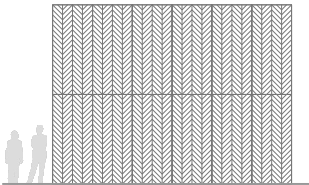
Beryl



Bismuth

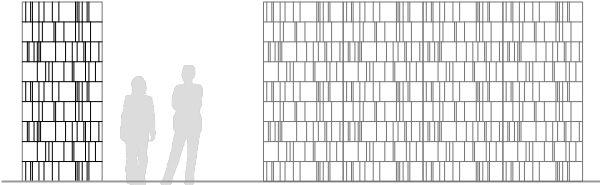


Conifer

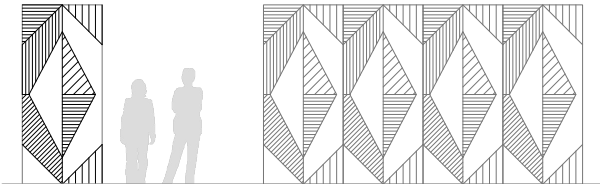
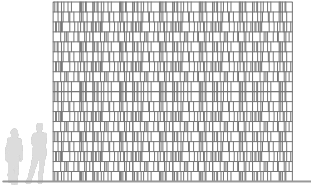


Ravine Patterns

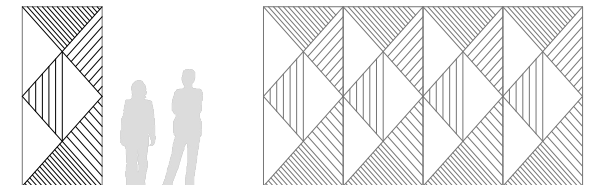
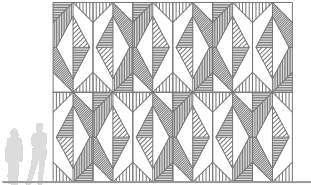
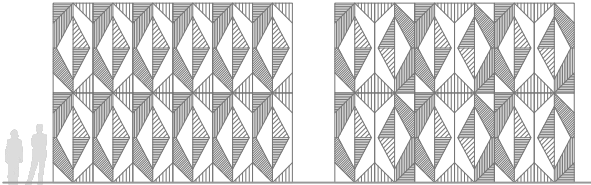
Contact Novaform for individual design cut sheets.



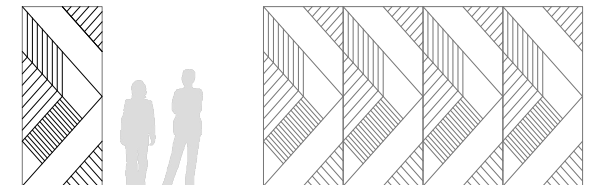
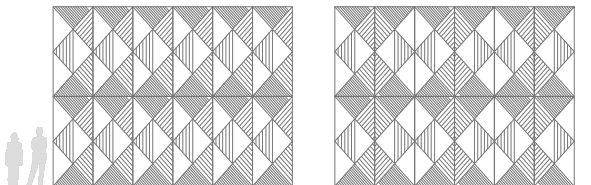
Fautline



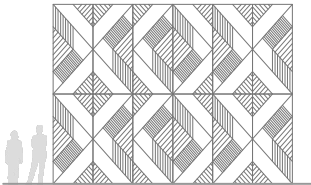
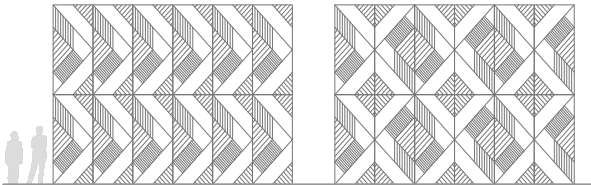
Feldspar



Galena

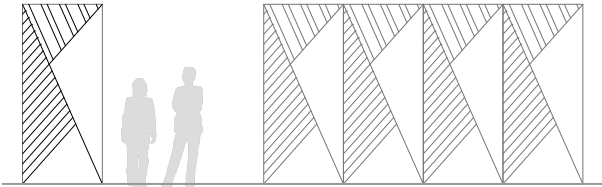


Gypsum

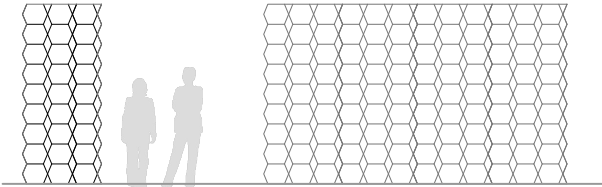
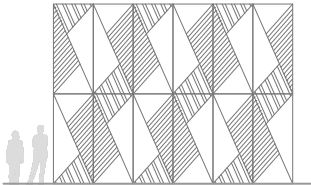
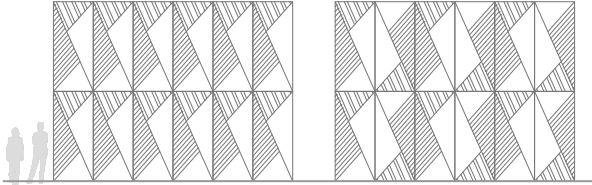


Ravine Patterns

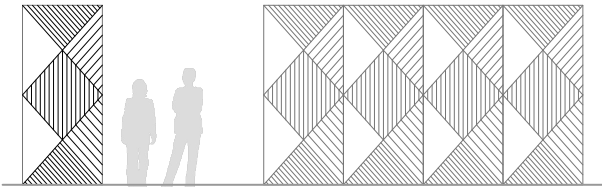
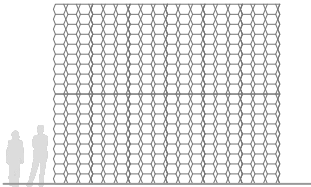
Contact Novaform for individual design cut sheets.



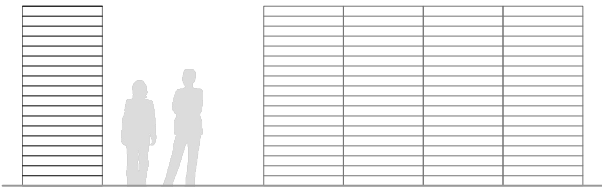
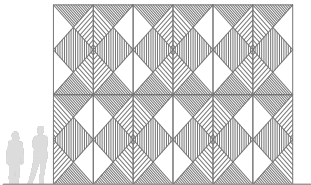
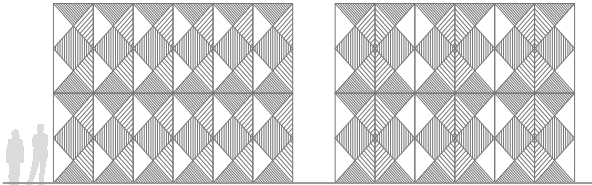
Halite



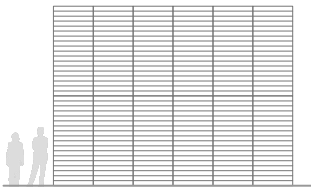
Heliodor



Jasper

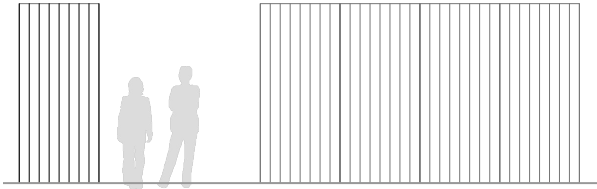


Latitude

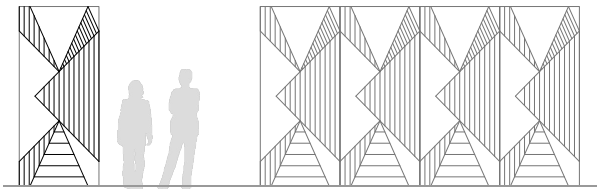
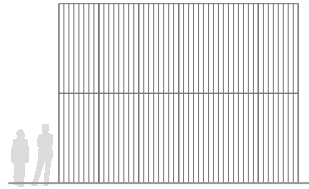


Ravine Patterns

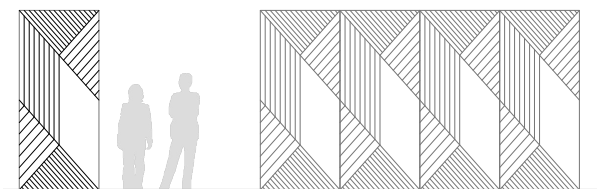
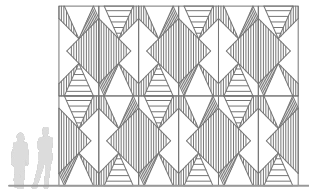
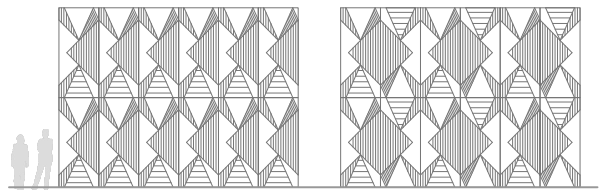
Contact Novaform for individual design cut sheets.



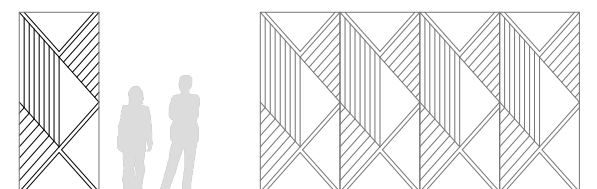
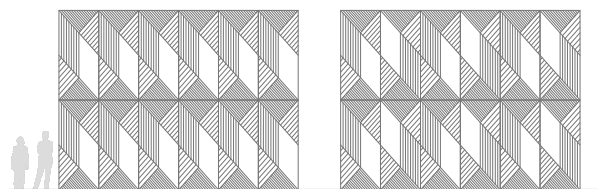
Longitude



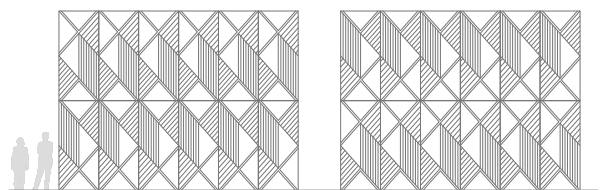
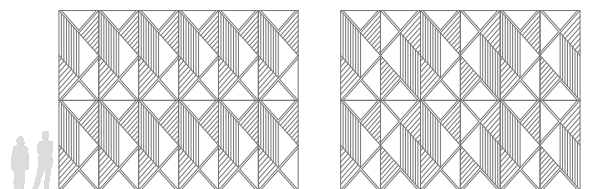
Marcasite



Pyrite

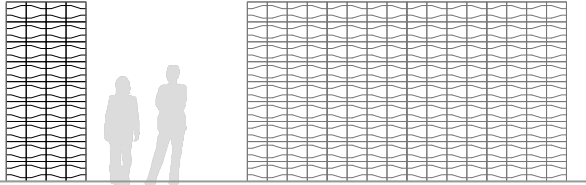


Quartz

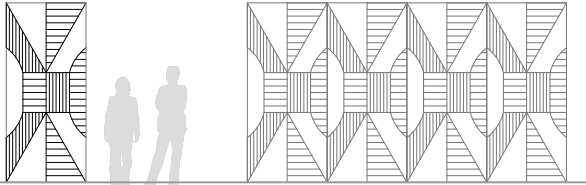
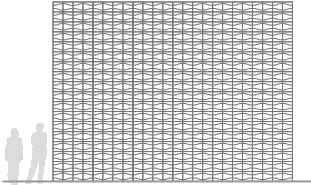


Ravine Patterns

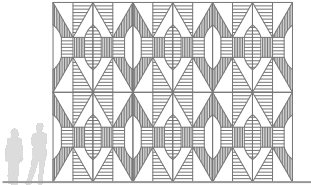
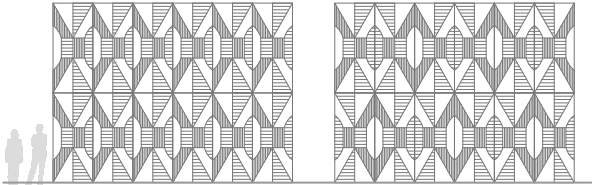
Contact Novaform for individual design cut sheets.



Shoal



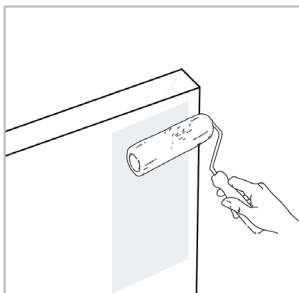
Zircon



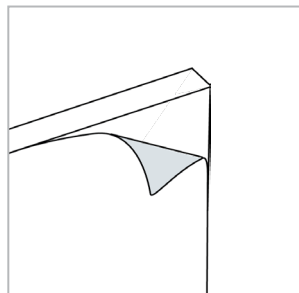
Specs

Product	Ravine Panel
Application	Walls, indoor only
Materials	100% Polyester
Colors	24 Standard 4 Printed Wood Patterns 146 Felt Topper Options
Custom	Variations available, request pricing
Panel Size	Full Sheet: 48" x 108"
Thickness	1/2" and 1", select colors 1/4"
Installation	Screws, Z-Clips, Stand-Offs, Aluminum Trim or Millwork Peel & Stick available upon request
Fire Rating	ASTME 84 Class A
Maintenance	Vacuum to remove loose dust Clean with warm water, a white rag, and clear mild dish detergent - spot test first, avoid rubbing aggressively
Recycled Content	60% recycled polyester fiber + 40% virgin polyester fiber
NRC	.45 - .75, direct application
Environmental	No waste by-products are generated during manufacturing process No chemicals are generated during manufacturing process VOC Compliant

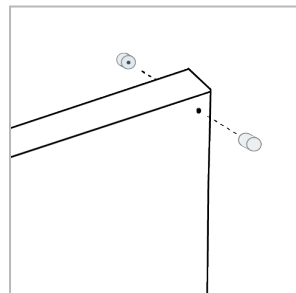
Installation & Instructions



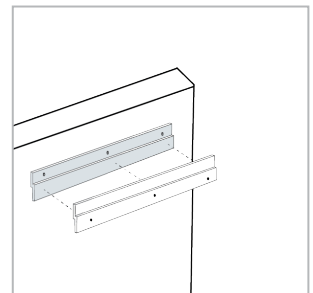
Direct Glue: Novaform's recommended adhesive is Roman Pro-555.



Peel and Stick adhesive is available by request.



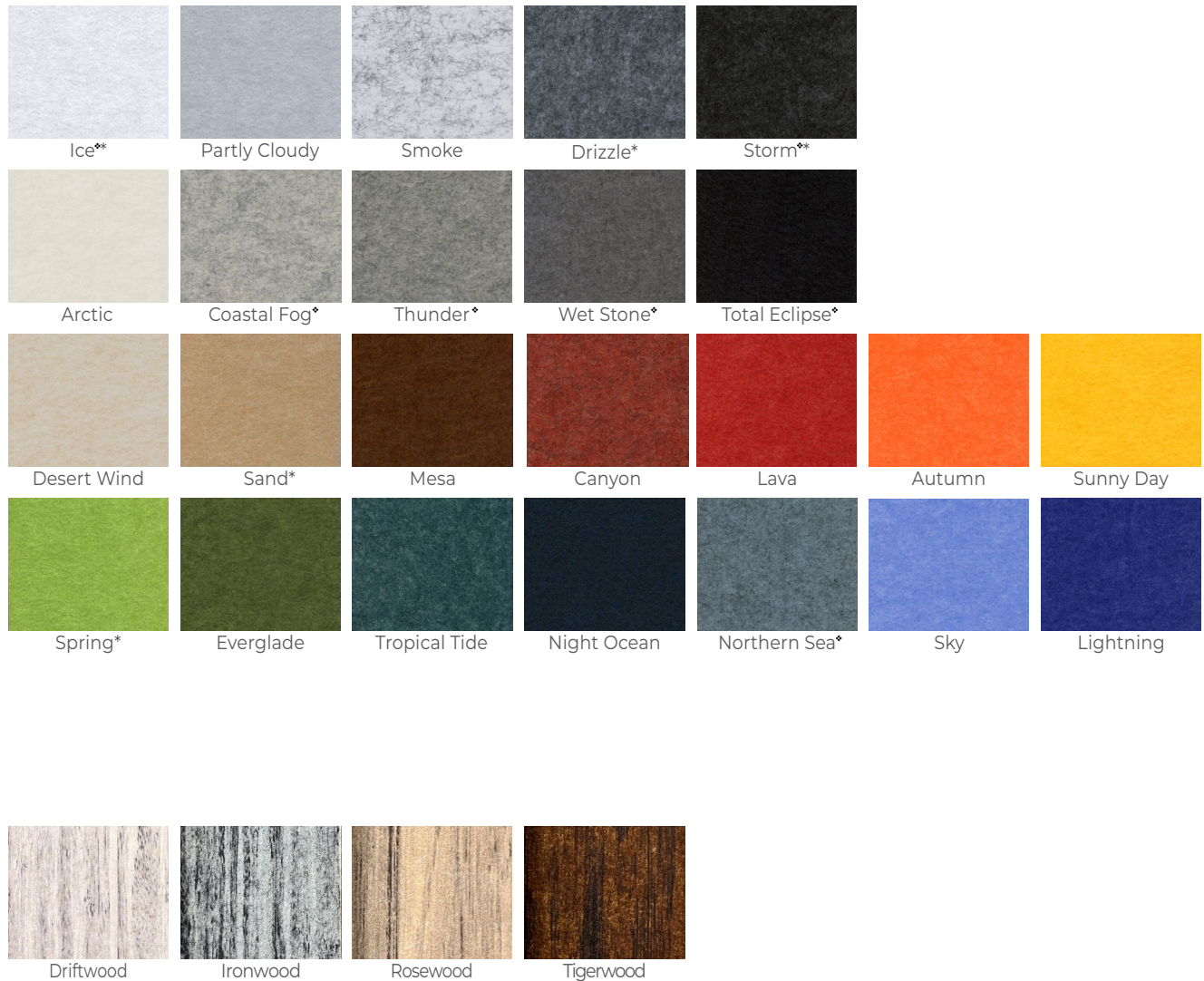
Holes for stand-offs can be drilled in the field or predrilled by request.



Z-Clips can be directly fastened to Novaform panels with screws.

Novaform Panels

PET Panel Color Palette - 12mm and Select 6mm and 25mm*

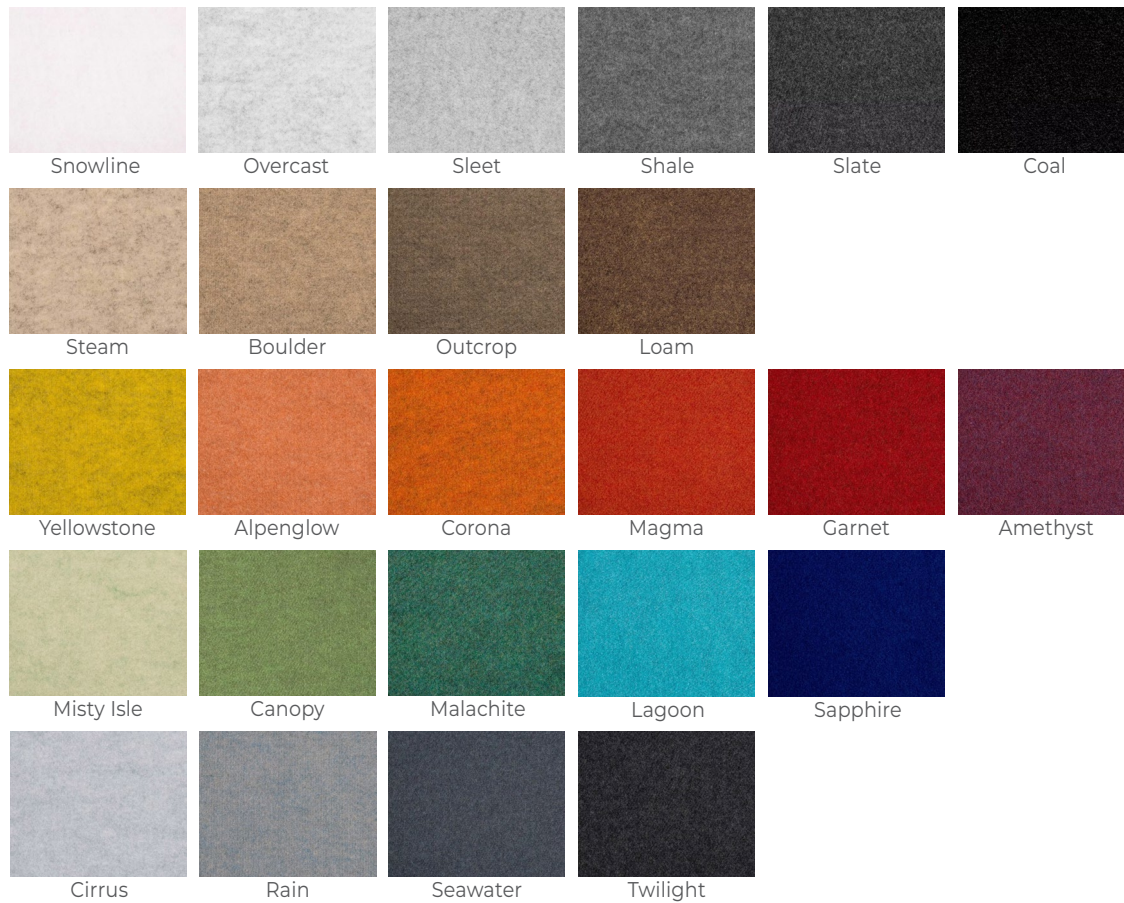


The nature of this material can result in color and texture variances across dye lots. Request samples to verify colors as they may also vary across digital and print media.

Novaform Felts

PET Felt Colors (3mm)

Novaform 3mm PET felt is made from solution-dyed 100% recycled polyester.



The nature of this material can result in color and texture variances across dye lots. Request samples to verify colors as they may also vary across digital and print media.

Partner Felts

Felt Color Palettes - Gabriel

Gabriel Soul felts are 100% wool, Soul Melange felts are 84% wool/16% polyester.



Contact Gabriel at mailUS@gabriel.dk for samples. Download color cards here: www.gabriel.dk.

The nature of this material can result in color and texture variances across dye lots. Request samples to verify colors as they may also vary across digital and print media.

Partner Felts

Felt Color Palettes - Camira

Camira Blazer felts are 100% wool.



Contact Camira at memos@camiragroup.com for samples. Download color cards @ www.camirafabrics.com

The nature of this material can result in color and texture variances across dye lots. Request samples to verify colors as they may also vary across digital and print media.

Partner Felts

Felt Color Palettes - Camira

Camira Blazer Lite felts are 100% wool.



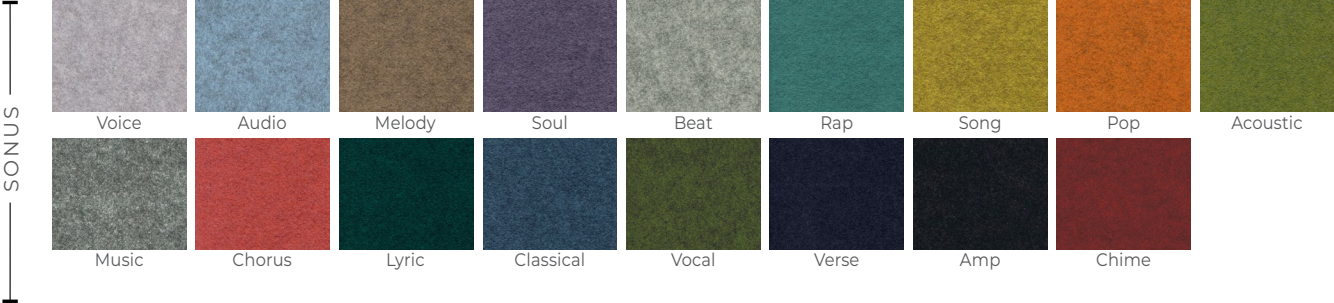
Contact Camira at memos@camiragroup.com for samples. Download color cards @ www.camirafabrics.com

The nature of this material can result in color and texture variances across dye lots. Request samples to verify colors as they may also vary across digital and print media.

Partner Felts

Felt Color Palettes - Camira

Camira Sonus felts are Polyester, Nylon, Viscose blend.



Contact Camira at memos@camiragroup.com for samples. Download color cards @ www.camirafabrics.com

The nature of this material can result in color and texture variances across dye lots. Request samples to verify colors as they may also vary across digital and print media.

Partner Felts

Felt Color Palettes - Guilford of Maine 9900

Guilford of Maine felts are 100% polyester (20% recycled content).



Contact Gabriel at mailUS@gabriel.dk for samples. Download color cards here: www.gabriel.dk

Contact Guilford of Maine at 800-544-0200 for samples. Download color card here: www.guilfordofmaine.com

The nature of this material can result in color and texture variances across dye lots. Request samples to verify colors as they may also vary across digital and print media.